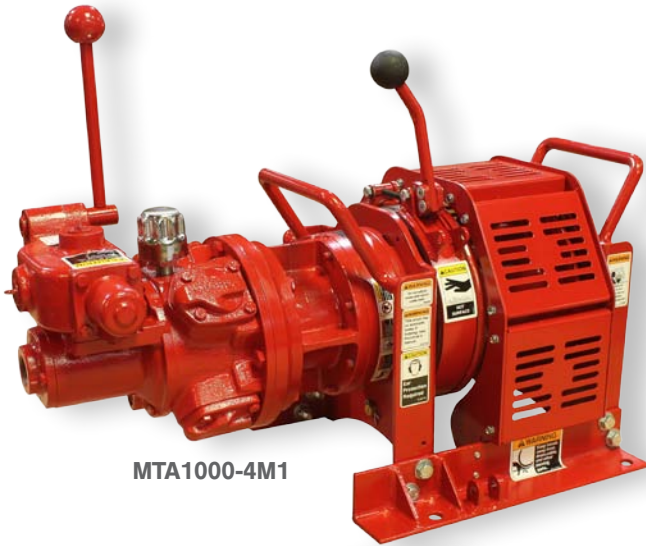


MTA SERIES

Mini Thern Air Winches Cutsheet

Thern's Mini Series Air Winches are ideal wherever power, precise control and portability are a priority. These tough little tuggers can handle a multitude of tasks around construction sites, mines, power plants, grain elevators, and in the oil patch.



MTA1000-4M1



MTA2000-5A1

1000 lb and
2000 lb Capacity
(454 kg, 907 kg)

- Radial Piston Air Motors
- Cycloidal Reducer
- Manual or Automatic Band Brakes
- Single Side Operator Control
- Wide Range of Wire Rope Payout
- Industry-Leading 2-Year Limited Warranty

ISO
9001:2008
REGISTERED



MINI THERN AIR SERIES



MTA

Series is ideal wherever power, precise control and portability are a prerequisite

HALF TON CAPACITY

Model MTA1000

LEVER CONTROL

Manual lever control comes standard on the M1 and A1 Models

BRAKE GUARD

Standard on all automatic brake models for optimum operator and mechanism protection

LIFTING HANDLES

Comfortable lifting handles for carrying and positioning. No sharp edges to damage slings

MULTIPLE DRUM LENGTHS

Multiple drum lengths are available for increased rope capacity requirements

RADIAL PISTON MOTOR

Radial piston motor provides reliable operation combined with 87:1 gear reducer ratio provides superior torque and working speed

BOLTED CONSTRUCTION

Bolted construction allows for easy maintenance, repair or customization. Gussets provide additional strength for over or under wound operation

IMPROVED BRAKE DESIGN

Easy access brake adjustment requires no special tools. Up to 96% band brake drum coverage provides maximum stopping power with minimal effort for both manual or automatic brake operation. The new brake is quieter and requires fewer adjustments

BALL BEARING OPERATION

Anti-friction ball bearings (equipped with grease zerks) provide long product life.



These products are not for lifting people, or things over people.



FEATURES AND OPTIONS

Mighty Power in a Mini Package!

ONE TON CAPACITY

Model MTA2000



PORTABILITY

Reduced unit weight combined with comfortable lifting handles greatly improves portability and positioning.

CORROSION RESISTANT FINISH

All winches come standard with red enamel coating and zinc plated hardware for corrosion protection. Optional epoxy finish is available for ultimate protection.

DRUM GUARD

Optional drum guard allows for virtually any payout angle and meets MSHA requirements.

AUTOMATIC BRAKE

An automatic brake option is available for ultimate ease of operation. A manual brake unit can be converted to automatic with simple bolt-on attachments.

MUFFLERS

To reduce noise, mufflers should be installed in both exhaust ports. Mufflers should be selected to reduce noise to the level required by the environment.

PENDANT CONTROL

Pendant control on the A3 models provide the ability to operate unit from a remote location 20 feet away. Our pendant controls come equipped with e-stop.

2-YEAR WARRANTY

Industry-leading two-year limited warranty on *all* our products.



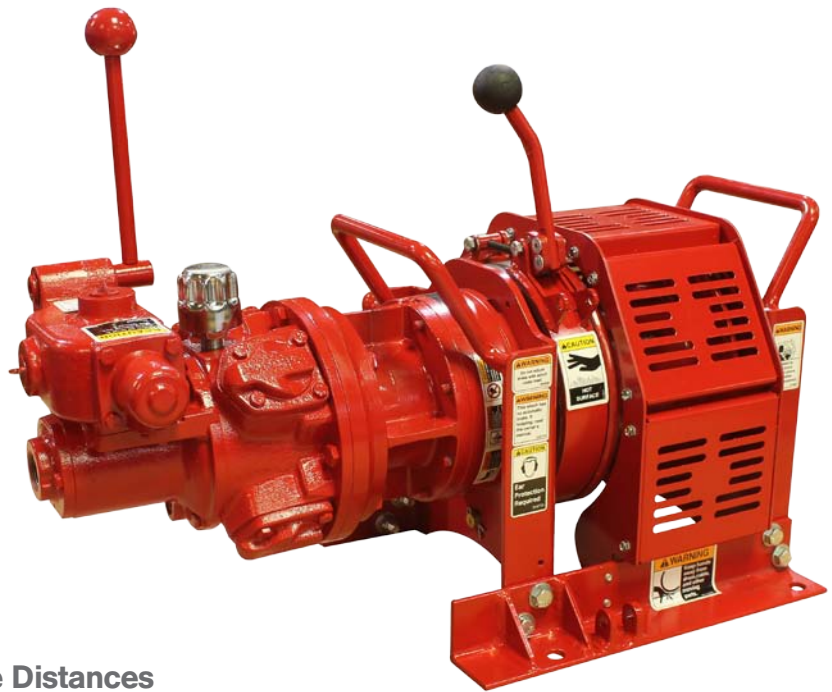
These products are not for lifting people, or things over people.



MINI THERN AIR SERIES

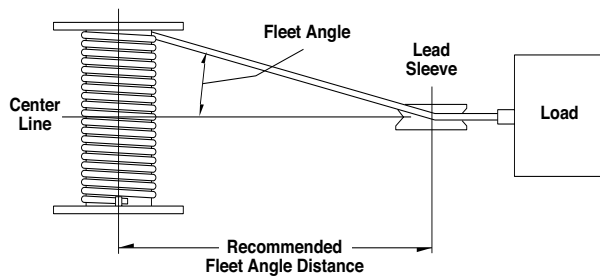


MTA1000



MTA1000 Minimum Fleet Angle Distances

| Series | Drum Diameter | | Flange Diameter | | Drum Width | | Fleet Angle Dist. | |
|---------|---------------|------|-----------------|------|------------|------|-------------------|------|
| | (in) | (mm) | (in) | (mm) | (in) | (mm) | (ft) | (m) |
| MTA1000 | 4.5 | 114 | 8.5 | 216 | 4.5 | 114 | 7.16 | 2.18 |



MTA1000 Drum Capacities*

| Drum Width | | | | 4.5 in (114 mm) | | | | | |
|---------------|------|---------------------|-------|-----------------|-----|----------|------|-----------|------|
| Rope Diameter | | Breaking Strength** | | 1st Layer | | Mid Drum | | Full Drum | |
| (in) | (mm) | (lb) | (kg) | (ft) | (m) | (ft) | (m) | (ft) | (m) |
| 1/4 | 6.35 | 7,000 | 3,175 | 16 | 4.8 | 87 | 26.5 | 190 | 57.9 |

* Drum capacity is based on a flange clearance of at least 1.5 times the wire rope diameter with the rope at top layer. ** Values based on 7x19 Galvanized Aircraft Cable wire rope.

MTA1000 Load Rating

| | | |
|-----------------------------|-----------|-------------|
| Load Rating 1st Layer | 1,400 lb | 635 kg |
| Load Rating Mid-Drum | 1,000 lb | 453 kg |
| Load Rating Full Drum | 800 lb | 362 kg |
| Line Speed 1st Layer* | 30 fpm | 9 m/min |
| Line Speed Mid Drum* | 41 fpm | 12.5 m/min |
| Line Speed Full Drum* | 52 fpm | 15.8 m/min |
| Input HP | 1.35 hp | 1.0 kw |
| Max. Stall Pull 1st Layer** | 2,600 lbs | 1179 kg |
| Pressure | 90 psi | 6.2 bar |
| Flow | 60 scfm | 1.69 m3/min |
| Pipe Inlet Size | 0.5 (in) | 12.7 mm |
| Hose Size | .75 (in) | 19.0 mm |
| Minimum Design Temp | -4° F | -20° C |

* Line speeds are estimated values based on testing and may vary based on conditions of air supply. Speeds shown are at max line pull.

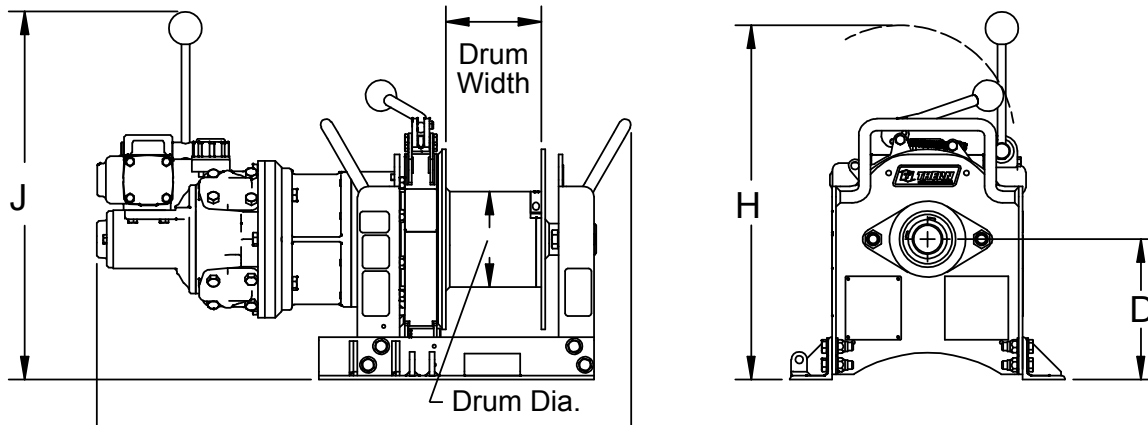
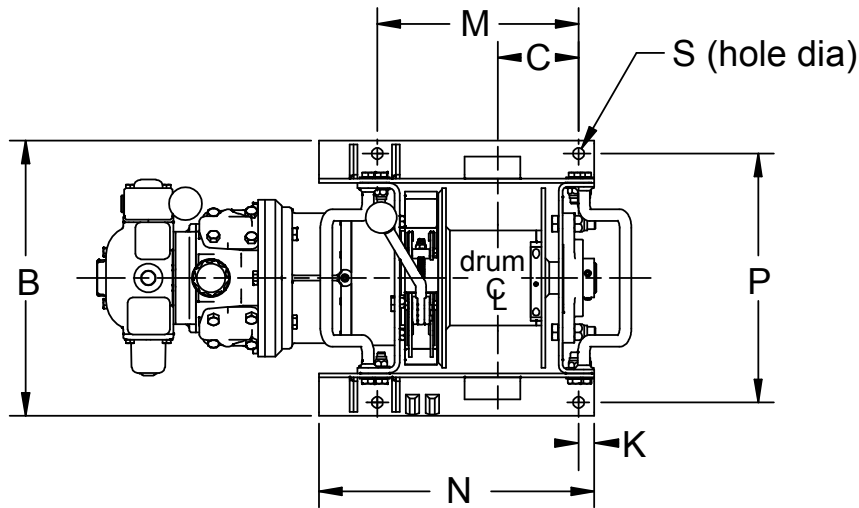
** Estimated value



These products are not for lifting people, or things over people.



MTA1000 DIMENSIONS



MTA Series Winch Dimensions

| Model | A | | B | | C | | D | | H | | J | |
|--------------------|-------|------|------|------|------|------|-------|------|-------|------|--------|------|
| | (in) | (mm) | (in) | (mm) | (in) | (mm) | (in) | (mm) | (in) | (mm) | (in) | (mm) |
| MTA1000 4M1 | 25.25 | 641 | 13 | 330 | 3.81 | 97 | 6.625 | 168 | 16.75 | 425 | 17.375 | 441 |
| MTA1000 4A1 | 25.25 | 641 | 13 | 330 | 3.81 | 97 | 6.625 | 168 | - | - | 17.375 | 441 |
| MTA1000 4A3 | 25.25 | 641 | 13 | 330 | 3.81 | 97 | 6.625 | 168 | - | - | - | - |

| | K | | M | | N | | P | | S (Hole Dia.) | | Ship. Wt. | |
|--------------------|------|------|------|------|------|------|-------|------|---------------|------|-----------|------|
| | (in) | (mm) | (in) | (mm) | (in) | (mm) | (in) | (mm) | (in) | (mm) | (lb) | (kg) |
| MTA1000 4M1 | 0.75 | 19 | 9.5 | 241 | 13 | 330 | 11.75 | 298 | .56 | 14 | 124 | 56 |
| MTA1000 4A1 | 0.75 | 19 | 9.5 | 241 | 13 | 330 | 11.75 | 298 | .56 | 14 | 133 | 60 |
| MTA1000 4A3 | 0.75 | 19 | 9.5 | 241 | 13 | 330 | 11.75 | 298 | .56 | 14 | 153 | 69 |

Dimensions are for reference only and subject to change without notice. Please contact Them for exact dimensions.

IMPORTANT:

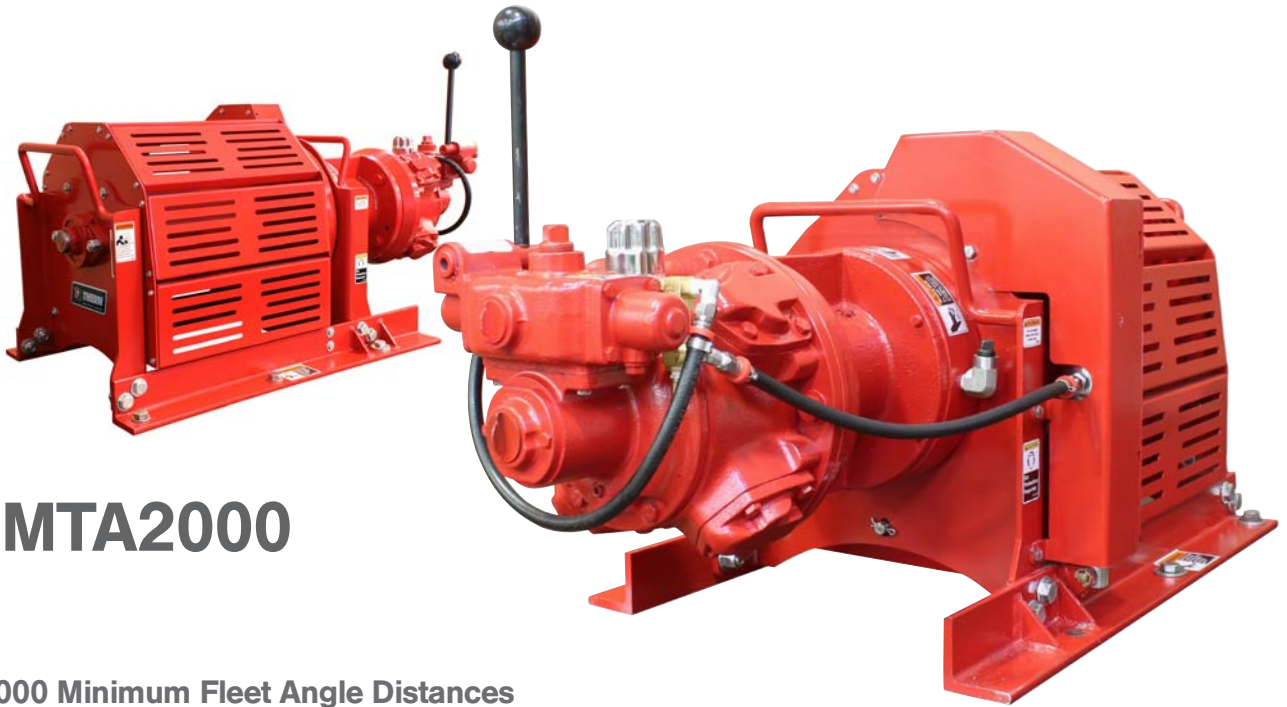
It is the owner or operator's responsibility to determine the suitability of the equipment to its intended use. Study all applicable codes, manuals and regulations. Be sure to read the Owner's Manual supplied with the equipment before operating it.



These products are not for lifting people, or things over people.



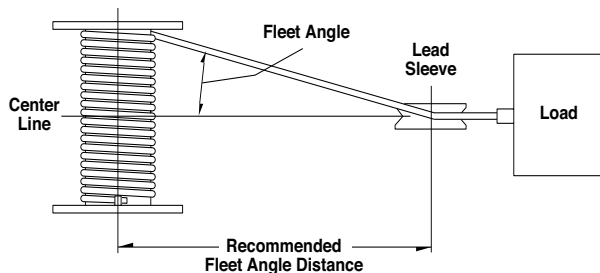
MINI THERN AIR SERIES



MTA2000

MTA2000 Minimum Fleet Angle Distances

| Series | Drum Diameter | | Flange Diameter | | Drum Width | | Fleet Angle Dist. | |
|------------|---------------|-------|-----------------|------|------------|------|-------------------|-----|
| | (in) | (mm) | (in) | (mm) | (in) | (mm) | (ft) | (m) |
| MTA2000-5 | 7 | 177.8 | 13.75 | 349 | 5.0 | 127 | 7.95 | 2.4 |
| MTA2000-13 | 7 | 177.8 | 13.75 | 349 | 13.0 | 330 | 20.67 | 6.3 |



MTA2000 Drum Capacities*

| Drum Width | | Rope Diameter | | Breaking Strength** | | 1st Layer | | Mid Drum | | Full Drum | |
|------------|------|---------------|------|---------------------|-------|-----------|------|----------|------|-----------|------|
| (in) | (mm) | (in) | (mm) | (lb) | (kg) | (ft) | (m) | (ft) | (m) | (ft) | (m) |
| 5 | 127 | 3/8 | 9.5 | 15,100 | 6,849 | 17 | 5.1 | 100 | 30.4 | 220 | 67.0 |
| 13 | 330 | 3/8 | 9.5 | 15,100 | 6,849 | 55 | 16.7 | 260 | 79.2 | 580 | 176 |

* Drum capacity is based on a flange clearance of at least 1.5 times the wire rope diameter with the rope at top layer. ** Values based on 6x37 IWRC EIPS wire rope.

MTA2000 Series Load Rating

| | | |
|-----------------------------|-----------|-------------|
| Load Rating 1st Layer | 2,700 lb | 1,224 kg |
| Load Rating Mid-Drum | 2,000 lb | 907 kg |
| Load Rating Full Drum | 1,600 lb | 725 kg |
| Line Speed 1st Layer* | 40 fpm | 12.2 m/min |
| Line Speed Mid Drum* | 54 fpm | 16.4 m/min |
| Line Speed Full Drum* | 67 fpm | 20.4 m/min |
| Input HP | 3.5 hp | 2.6 kw |
| Max. Stall Pull 1st Layer** | 5,800 lbs | 2630 kg |
| Pressure | 90 psi | 6.2 bar |
| Flow | 140 scfm | 3.96 m3/min |
| Pipe Inlet Size | 0.75 (in) | 19.0 mm |
| Hose Size | 1.0 (in) | 25.4 mm |
| Minimum Design Temp | -4° F | -20° C |

* Line speeds are estimated values based on testing and may vary based on conditions of air supply. Speeds shown are at max line pull.

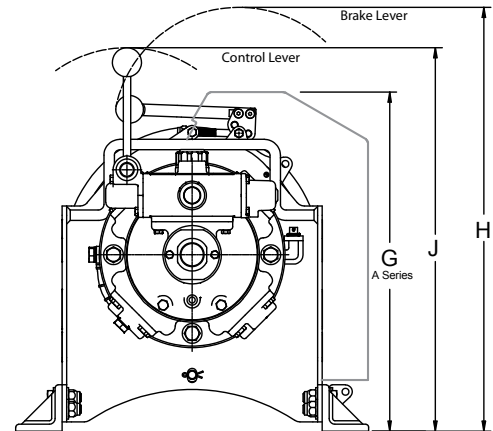
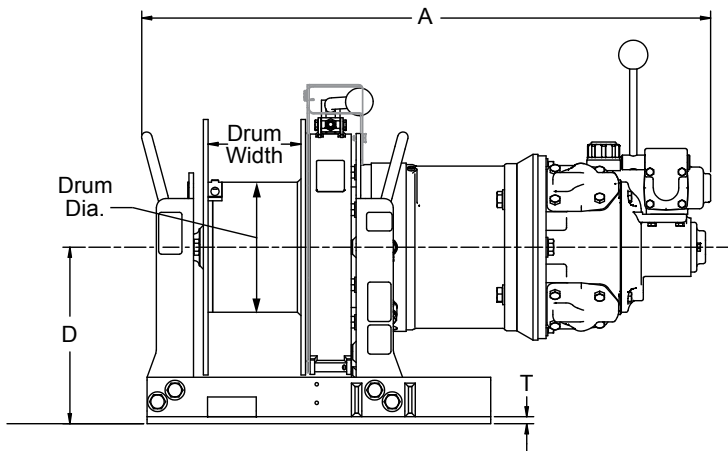
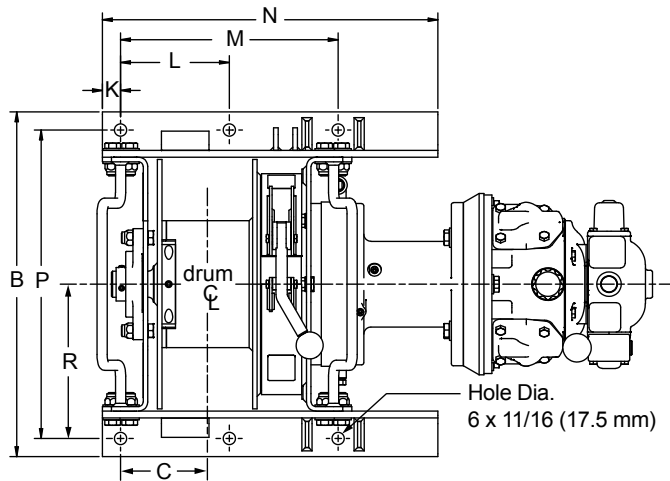
** Estimated value



These products are not for lifting people, or things over people.



MTA2000 DIMENSIONS



MTA2000 Series Winch Dimensions

| Model | A | | B | | C | | D | | G | | H | | J | | K | |
|--------------|--------|------|------|------|-------|------|------|------|-------|------|------|------|--------|------|------|------|
| | (in) | (mm) | (in) | (mm) | (in) | (mm) | (in) | (mm) | (in) | (mm) | (in) | (mm) | (in) | (mm) | (in) | (mm) |
| MTA2000-5M1 | 30.625 | 778 | 19 | 482 | 4.781 | 121 | 9.5 | 241 | - | - | 22.8 | 579 | 20.625 | 524 | 1.0 | 25.4 |
| MTA2000-5A1 | 30.625 | 778 | 19 | 482 | 4.781 | 121 | 9.5 | 241 | 18.25 | 463 | - | - | 20.625 | 524 | 1.0 | 25.4 |
| MTA2000-5A3 | 30.625 | 778 | 19 | 482 | 4.781 | 121 | 9.5 | 241 | 18.25 | 463 | - | - | - | - | 1.0 | 25.4 |
| MTA2000-13M1 | 30.625 | 778 | 19 | 482 | 8.781 | 223 | 9.5 | 241 | - | - | 22.8 | 579 | 20.625 | 524 | 1.0 | 25.4 |
| MTA2000-13A1 | 30.625 | 778 | 19 | 482 | 8.781 | 223 | 9.5 | 241 | 18.25 | 463 | - | - | 20.625 | 524 | 1.0 | 25.4 |
| MTA2000-13A3 | 30.625 | 778 | 19 | 482 | 8.781 | 223 | 9.5 | 241 | 18.25 | 463 | - | - | - | - | 1.0 | 25.4 |

| | L | | M | | N | | P | | S (Hole Dia.) | | T | | Ship. Wt. | |
|--------------|------|------|------|------|------|------|------|------|---------------|------|------|------|-----------|------|
| | (in) | (mm) | (in) | (mm) | (in) | (mm) | (in) | (mm) | (in) | (mm) | (in) | (mm) | (lb) | (kg) |
| MTA2000-5M1 | 6 | 152 | 12 | 305 | 18.5 | 470 | 17 | 432 | .6875 | 17.5 | .375 | 9.5 | 282 | 128 |
| MTA2000-5A1 | 6 | 152 | 12 | 305 | 18.5 | 470 | 17 | 432 | .6875 | 17.5 | .375 | 9.5 | 294 | 134 |
| MTA2000-5A3 | 6 | 152 | 12 | 305 | 18.5 | 470 | 17 | 432 | .6875 | 17.5 | .375 | 9.5 | 315 | 143 |
| MTA2000-13M1 | 10 | 254 | 20 | 508 | 26.5 | 673 | 17 | 432 | .6875 | 17.5 | .375 | 9.5 | 320 | 145 |
| MTA2000-13A1 | 10 | 254 | 20 | 508 | 26.5 | 673 | 17 | 432 | .6875 | 17.5 | .375 | 9.5 | 332 | 151 |
| MTA2000-13A3 | 10 | 254 | 20 | 508 | 26.5 | 673 | 17 | 432 | .6875 | 17.5 | .375 | 9.5 | 353 | 160 |

Dimensions are for reference only and subject to change without notice. Please contact Them for exact dimensions.

IMPORTANT:

It is the owner or operator's responsibility to determine the suitability of the equipment to its intended use. Study all applicable codes, manuals and regulations. Be sure to read the Owner's Manual supplied with the equipment before operating it.



These products are not for lifting people, or things over people.

